

# Motala 6000 LS



Lift with a fully enclosed car with automatic car doors, built and manufactured in Sweden. For all type of buildings with limited space available.

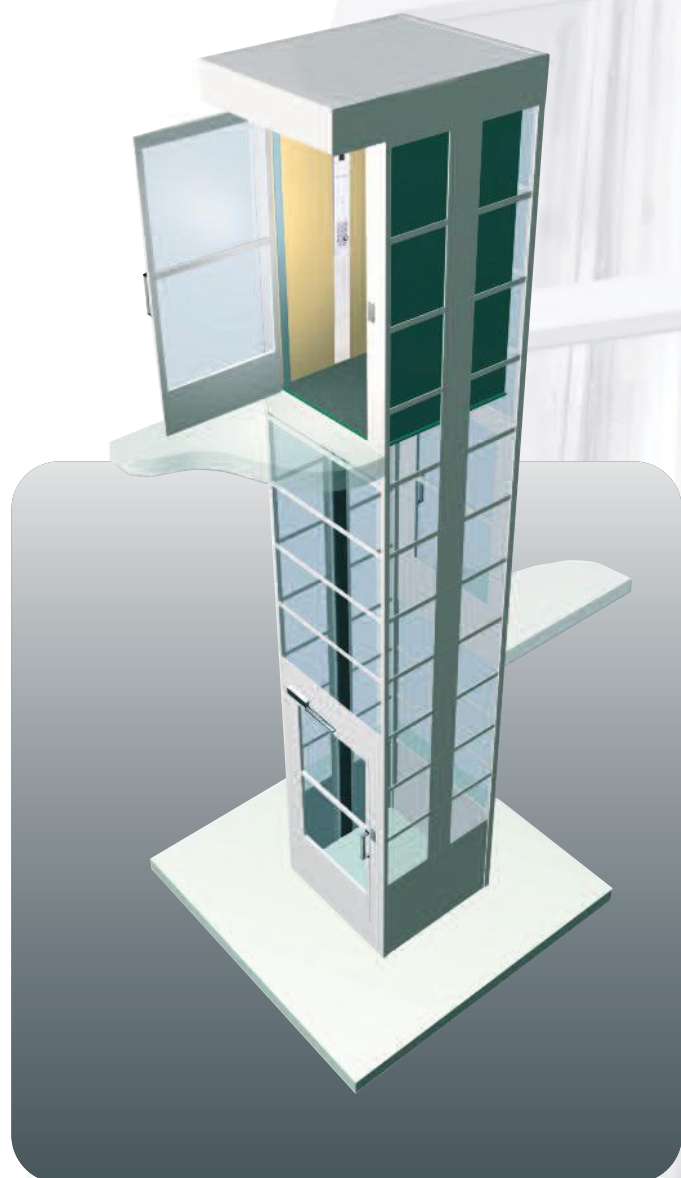
**MOTALA**  
*Largest inside - smallest outside*

## Large inside, small on the outside



Motala 6000 LS, certified under the machinery directive, runs with max speed of 0,15 m/s. Compared with lift with higher speed, Motala 6000 LS doesn't need a pit or extra headroom height, not even for new buildings. The installation costs can be kept to a minimum. Thanks to the fully enclosed car the call and destination function is like a conventional lift.

Installation of a lift is often a compromise between available space and lift car size. Motala 6000 LS offers the most space efficient solution in the market. The option with fully shaft keeps the spacious feeling and let the light come through the shaft, this means that the building keeps its original character.





## Flexible interior

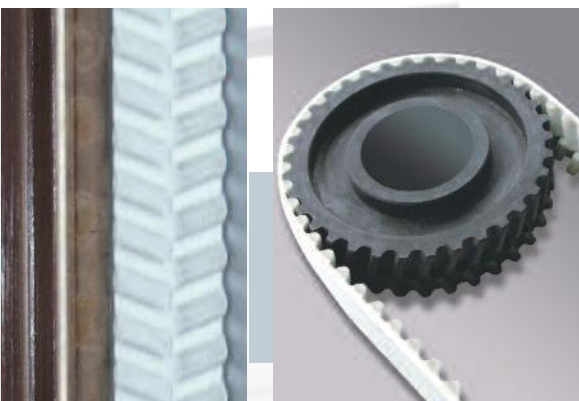
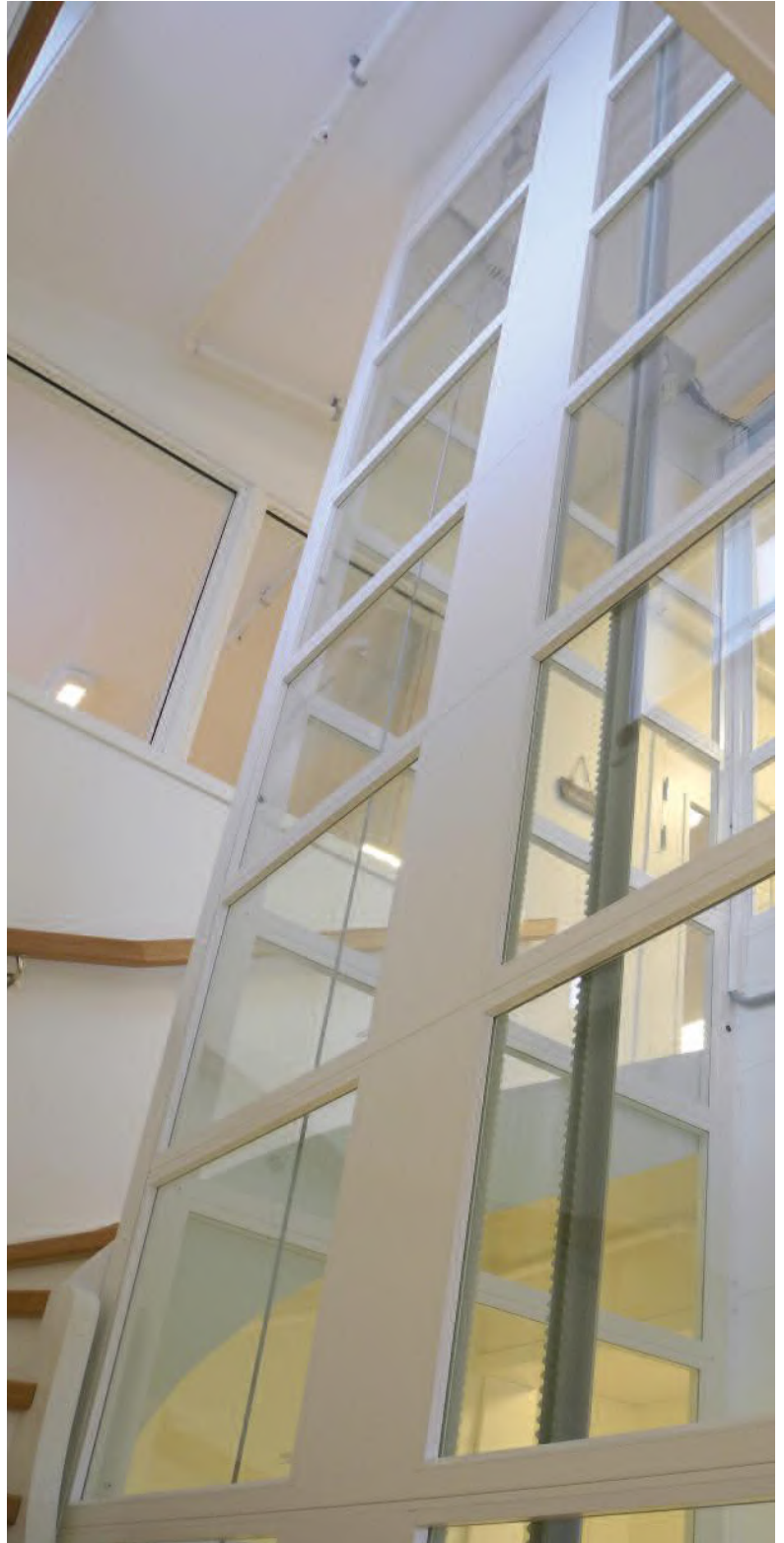
Motala 6000 LS can offer a number of different options to be able to match the surroundings.

Flooring, doors, car cladding, glass, mirrors and flipchair.

Lift shaft and shaft doors can be selected in any RAL colour, even different from each other.

## Glassed shaft

Motala 6000 LS can be installed with glass on all four sides, this creates light and spacious feeling on the building. You can select between nine different glass colours





## Motala Door

The car doors in Motalal 6000 LS are completely hidden behind the car walls. The design is one of the thinnest lift car doors in the market.

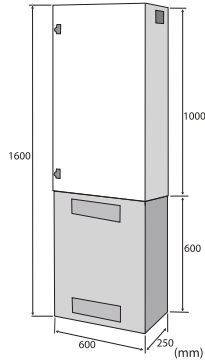


## Quick Installation

With small alteration of the building and good planning, the disturbance for the residential is a minimum. Normal installation time for the Motala 6000 LS is two weeks.



# Project planning



Control pannel  
Can be placed at any floor,  
prefeable is in connection  
to top floor

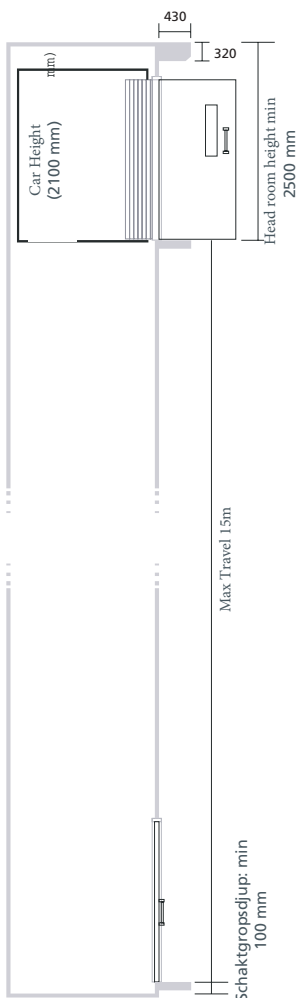
## Technical Specification

- Pit depth: 100mm
- Head room height: 2500mm
- Max speed: 0,15 m/s
- Max load: 500 kg
- Max number of floors:6
- Max travel:15 m
- Power feed: 400 V, 50 Hz
- Hoisting system: Belt drive, invertor drive.
- Motor : 1,5 kW, 10 A main fuse
- Shaft door: manuel or automatic swing door
- Car door: automatic
- Shaft: Steel or glass
- Emergency phone

## Availiabe sizes

750    800    850    900    950    1000    1100    1200    1300

Shaft dimensions

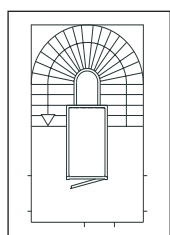


		Schaktbredd									
		750	800	850	900	950	1000	1100	1200	1300	
Schaktdjup	1000	•									
	1050	•									
	1100	•	•								
	1150	•	•	•	•						
	1200	•	•	•	•	•					
	1250	•	•	•	•	•	•				
	1300	•	•	•	•	•	•	•			
	1350	•	•	•	•	•	•	•	•		
	1400	•	•	•	•	•	•	•	•	•	
	1450	•	•	•	•	•	•	•	•	•	•
	1500	•	•	•	•	•	•	•	•	•	•
	1550	•	•	•	•	•	•	•	•	•	•
	1600	•	•	•	•	•	•	•	•	•	•
	1650	•	•	•	•	•	•	•	•	•	•
	1700	•	•	•	•	•	•	•	•	•	•
	1750	•	•	•	•	•	•	•	•	•	•
	1800	•	•	•	•	•	•	•	•	•	•
	1850	•	•	•	•	•	•	•	•	•	•
	1900	•	•	•	•	•	•	•	•	•	•
	1950	•	•	•	•	•	•	•	•	•	•
	2000	•	•	•	•	•	•	•	•	•	•
2050	•	•	•	•	•	•	•	•	•	•	
2100	•	•	•	•	•	•	•	•	•	•	
2160	•	•	•	•	•	•	•	•	•	•	

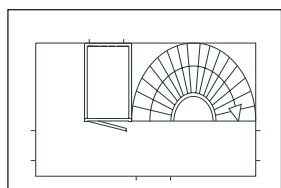
- Car internal width = Shaft external width - 200mm.
- Car internal depth = Shaft external depth - 150mm.
- Well = Shaft external + 30mm.
- Doorwidth = Carwidth upto the carwidth of 900mm, cars with bigger carwidth has either 900mm (standard) or 1000mm (option) doors.
- Exeption from this rule are the blumarked areas in the table which have the doorwidth 800mm.
- Car height is 2100mm and doorheight 2000mm.
- 2100mm doorheight available as an option. Top height will then increase by 100mm.
- The blumarked areas in the table are not available with reduced pit (100mm).
- Through-Type-Car (TTC) is available for all the dimension when delivered with 1000mm pit.
- TTC with reduced pit (100mm) is available for shaftdepths 1650mm and larger.
- TTC is available for all the dimensions in the cases where one of the sides have only one door either on topmost or lowest stop.

# Car decoration options

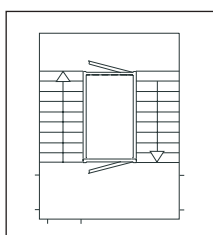
## Lift usage in stairwell



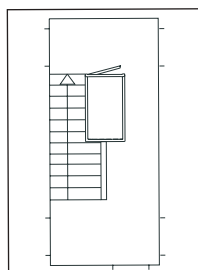
Middle of the stairs



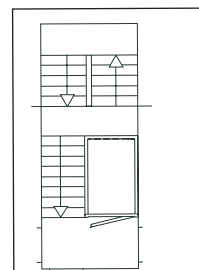
Next to the rounded stairs



Middle of the stair well



Next to the stairs



Extra stair well added

## Ceiling / Lights White painted steel panel



URSA LED-spotlights

## Car wall laminated metal.



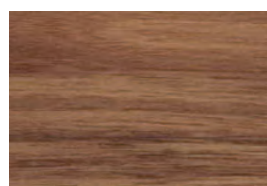
Oak R31



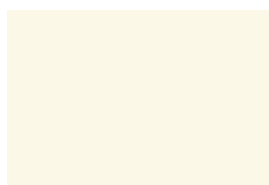
White oak R32



Cherry R33



Walnut R34



Snowberry White P60



Asturias Satin F

## Golv gummi



Dallas Black



Smoke Grey



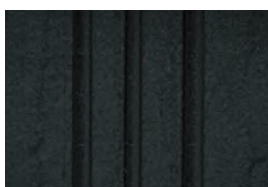
Deriver Gray



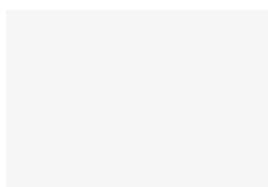
Shell Grey



Coral Red

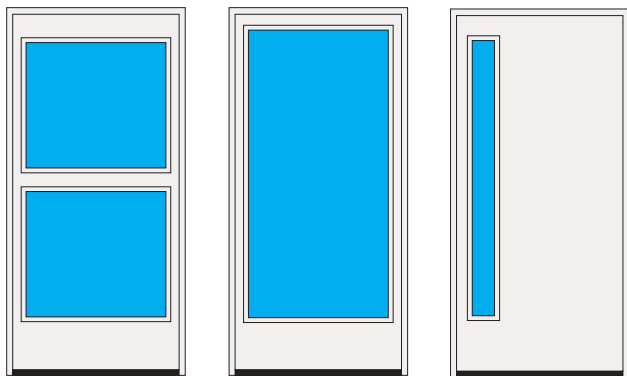


Twilight black



Lokal golvbeklädnad

## Doors and door handles



1 d (Standard)

1 g (Standard)

1 h (T)

(T) Optional



Teak (T)

Oak (T)

Stainless steel (T)

## Shaft glass



Ocean 1

Ocean 2

Smoke 1

Smoke 2



Bronze 1

Bronze 2

Frosted 1

Frosted 2

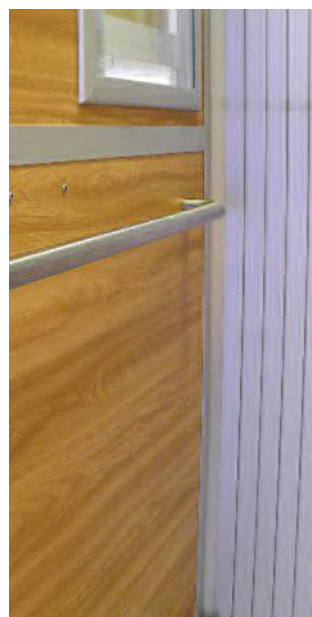
Clear

## Hand rail



Round with bended ends in brushed stainless steel.

## Options



Handrail Stainless steel or Oak

Flipchair

Mirror/ vandal proof mirror

Braile buttons

Key locking/shool locking

Ramp instead of pit(100mm)

High doors and car +100

Shaft in any RAL colour

Glassed shaft / Car

Fire door EI30/EW60

Voice syntesizer

Remote pushes

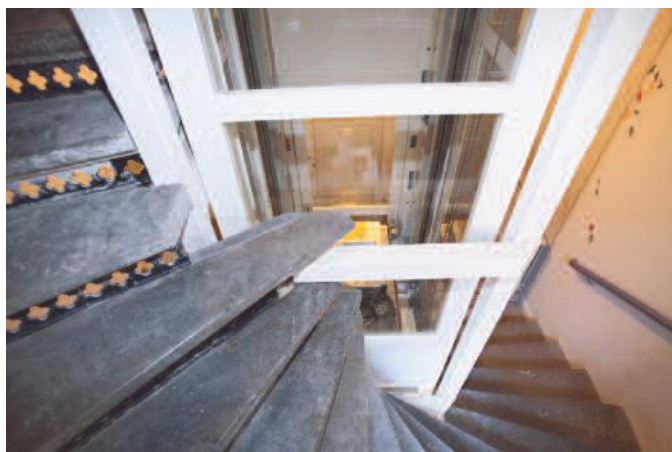
Elbow call stations

Door auto

Fire drive, park on a pre defined floor

COP according to EN81-70

# Motala 6000 LS - Inegrated in any building



**MOTALA**  
Largest inside - smallest outside

**Motala Hissar AB**

Luxorgatan 1, Box 4029 591 04 MOTALA

Tel. +46 141 23 70 50 Fax +46 141 23 70 51 [www.motalahissar.se](http://www.motalahissar.se)